

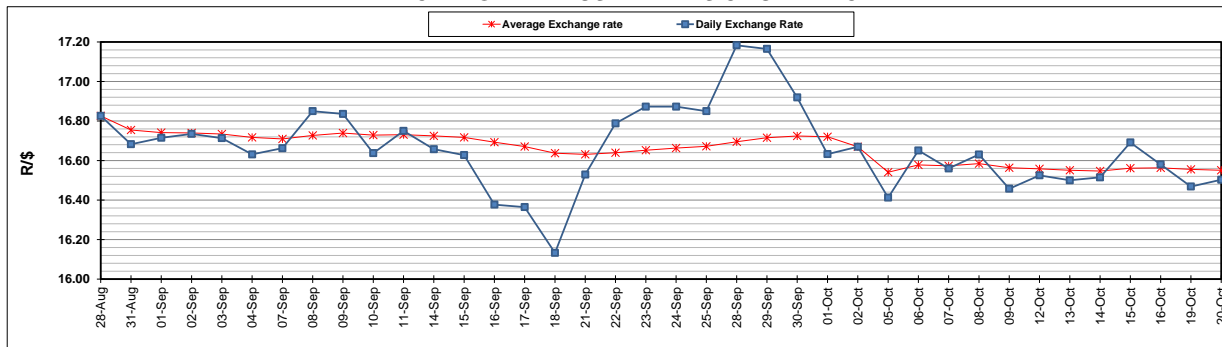
	PETROL 95 ULP	PETROL 93 ULP & LRP	DIESEL 0.05%	DIESEL 0.005%	ILL. PAR.
GAUTENG PUMP PRICE (SA c/l) AS FROM 07/10/2020	1,486.000	1,466.000	-	-	-
WHOLESALE PRICE (SA c/l) AS FROM 07/10/2020	-	-	1,237.560	1,238.960	640.828
SINGLE NATIONAL MAXIMUM RETAIL PRICE	-	-	-	-	798.000
BASIC FUEL PRICE - 20/10/2020 (SA c/l)	511.797	506.791	493.995	497.071	466.705
PRESS RELEASE CONTRIBUTION TO BFP 07/10/2020 - 20/10/2020 (SA c/l)	533.470	523.470	486.630	488.030	436.128
UNIT OVER/(UNDER) RECOVERY - 20/10/2020 (SA c/l)	21.673	16.679	(7.365)	(9.041)	(30.577)
AVERAGE BASIC FUEL PRICE 02/10/2020 - 20/10/2020	523.887	514.979	498.145	500.368	468.639
AVERAGE UNIT OVER/(UNDER) RECOVERY 02/10/2020 - 20/10/2020	16.968	13.799	9.254	9.123	(14.973)

### ANALYSIS MOVEMENT OF AVERAGE OVER/(UNDER) RECOVERY

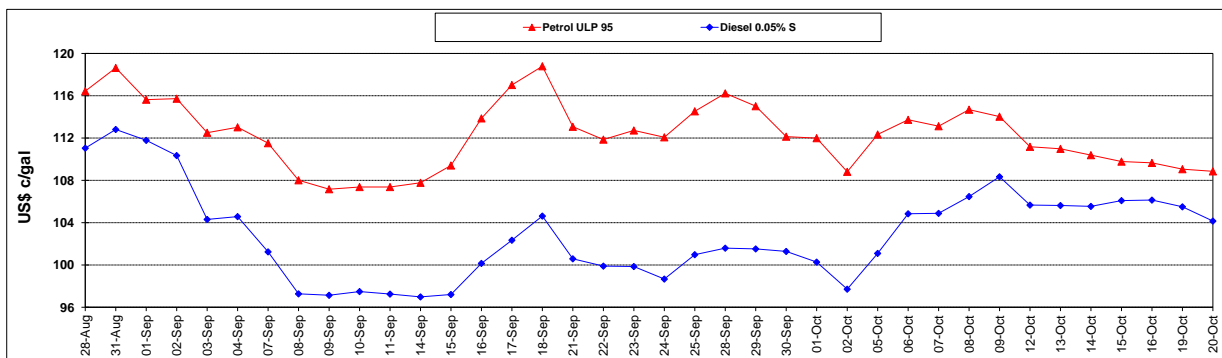
	PETROL 95	PETROL 93	DIESEL 0.05%	DIESEL 0.005%	ILL. PAR.
- MOVEMENT IN INTERNATIONAL PRODUCT PRICES	11.609	8.531	4.159	4.006	(19.767)
- MOVEMENT IN EXCHANGE RATE	5.359	5.268	5.095	5.118	4.794
AVERAGE UNIT OVER/(UNDER) RECOVERY 02/10/2020 - 20/10/2020	16.968	13.799	9.254	9.123	(14.973)

### R/\$ EXCHANGE RATE - (R/\$16.5028 - 20/10/2020)

#### EXCHANGE RATE USED IN BASIC FUEL PRICE



#### INTERNATIONAL PRODUCT PRICES OF BASKET USED IN BASIC FUEL PRICE



#### BASIC FUEL PRICE IN SA CENTS PER LITRE

